

## Specifications Offshore and support vessel "Victory-G"



### Main Details:

**Year of construction:** 2004  
**Refurbished:** 2006  
**Vessel Name:** "Victory-G"  
**Owner:** Rederij Groen BV  
**Flag:** Panama  
**IMO Number:** 9318838  
**Call Sign:** 3ECY4  
**MMSI:** 354791000

### Dimensions:

**L.o.a** : 53.80 Mtrs.  
**Width** : 13.80 Mtrs.  
**Draught** : 3.80 Mtrs  
**Net Tonnage** 317  
**Gross Tonnage** 1058

### Generator(s):

**Cummins** : 2x N4-DM, 260 kW  
**Cummins** : 1x 6CT8.3-D(M)122kW (Harbour)

### Main engine(s):

**Caterpillar** : 2x 3512, 1575HP  
 Total 3150 HP @ 1800 RPM

### Propulsion system:

**Propeller** : 2x bronze 4 blades  
 with Kortnozzle  
**Rudder** : 2x independent

### Bow Thruster:

1x Caterpillar 3412FFP Tunnel Type 5 Ton

### Anchor(s):

1600 kg port anchor, 1600 kg stbd anchor,  
 Port chain-10 lengths, St.chain- 7 lengths.

### Crane(s)/Lifting material:

**Deck Crane** : 1x TTS, GPF 320-10-15  
 10.0 Ton SWL @ 15 mtr  
**MOB Crane** : 1x Sekwang M.M., 1.65 Ton SWL  
**A-Frame** : 1x Davit PLR-12004 12 tons

### Deck Equipment:

**Anchor Windlass** : 1x Hydraulic 5 Ton @ 15 m/min  
 Brake holding 30.05 Ton  
**Tugger Winch** : 1x Hydraulic 10 Ton  
**Capstan** : 2x Hydraulic 5 Ton

### Safety Equipment:

**MOB** : 1x 6 pers. with outboard motor  
**Life Rafts** : Solas Approved 6 x 25 pers.

### Special features:

**Fuel Hose Reel** : 1x 4" 240 mtr  
**Dist. Line Reel** : 1x 4" 110 mtr  
**Cable Reel** : 1x 52 mm 8000 mtr

### Communication Equipment:

**GMDSS** : A1 – A2 – A3  
**SSB MF/HF radio:** 1x FurunoFS-2570-C with DSC  
**VHF Radio** : 2x FurunoFM-8500with DSC  
 : 1x SailorRT5022 with DSC  
**Portable VHF** : 3x JotronTron TR20  
**Inmarsat Sat-C** : 1x FurunoFelcom 15  
 : 1x FurunoFelcom 18  
**Mini-M** : 1x Iridium  
**VSAT System** : 1x Sailor  
**AIS** : 1x Furuno FA-100  
**E.P.I.R.B.** : 1x JotronTron40 S  
**UHF Fire** : 2x Sailor

### Navigation Equipment:

**Radar** : 1x FurunoFAR-2117  
 : 1x FurunoFR-7062  
 : 1x FurunoFAR-2117  
**GPS Navigation** : 2x FurunoGP-150  
 : 1x FurunoGP-32  
**Echo Sounder** : 1x FurunoFE-700  
**Navtex** : 1x FurunoNX-500  
**Gyro Comass** : 1x Robertson RGC-11  
**Magnetic Compass**  
 : 1x DaikoSR150PK  
**Auto. Pilot Fwd** : 1x Simrad AP50  
**Auto. Pilot Aft.** : 1x Simrad AP50  
**Electronic Charts** : 1x Transas NavigatorTsunami  
**Anemometer** : 1x Furuno RD 30

### Bunker/Towing/Storage capacity:

**Fresh Water** : 158m<sup>3</sup>  
**MDO** : 850 m<sup>3</sup>  
**Lub Oil** : 11 m<sup>3</sup>  
**Fuel Transfer** : 4" TODO  
**Bollard Pull** : 34,5 Ton  
**Freezer** : 30,18 m<sup>3</sup> below deck  
 3x 20ft Reefer container on deck  
**Dry Storage** : 56,45 m<sup>3</sup> below deck

### Speed/Fuel Consumption:

**Max Speed** 12,5 knots :8500 ltr/24 hrs  
**Eco Speed** 8,0 knots :4500 ltr/24 hrs

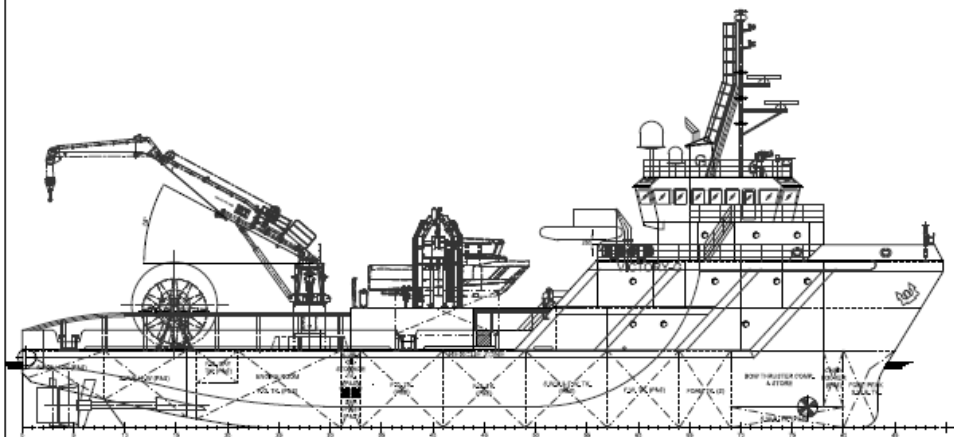
### Water maker(s):

**FW Maker** : Aquamar AQE 6D  
 Reverse Osmosis plant

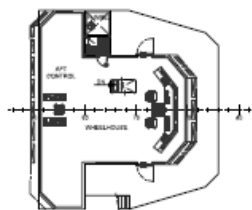
**Capacity** : 4.8 m<sup>3</sup>/per day

### Accommodation (fully air conditioned):

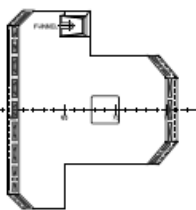
**Total Accommodation** : 50  
**Berths** : 4 x 1 pers., 3 x 2 pers.  
 4 x 4 pers., 4 x 6 pers.



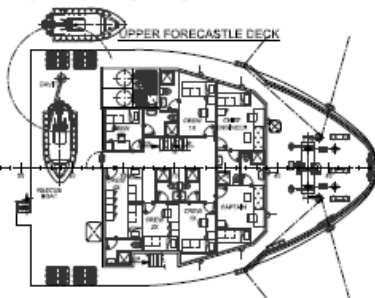
WHEELHOUSE DECK



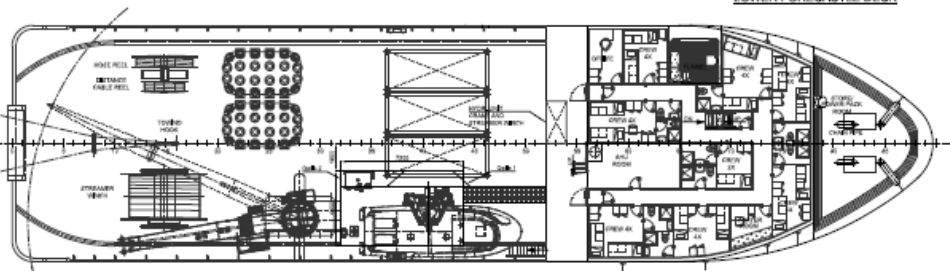
TOP DECK



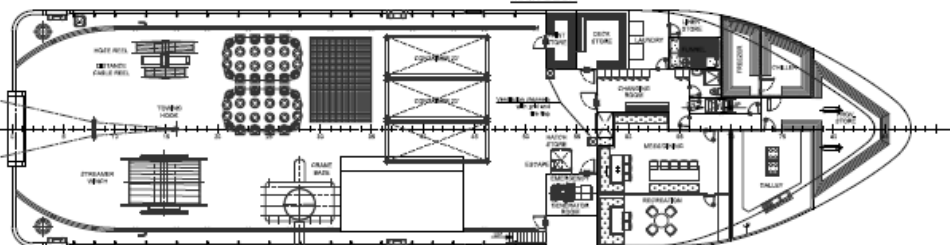
UPPER FORECASTLE DECK



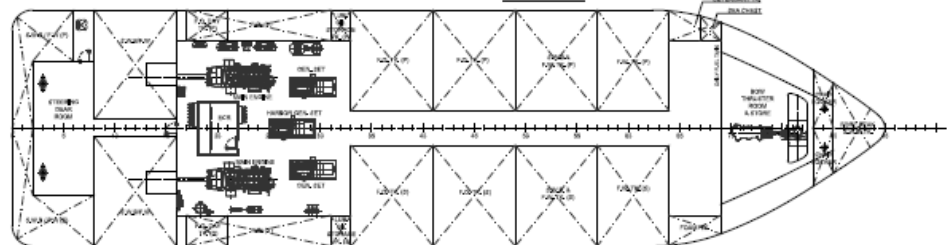
LOWER FORECASTLE DECK



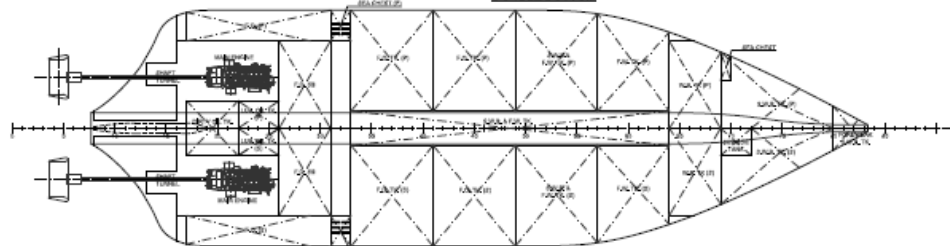
MAIN DECK



LOWER DECK



DOUBLE BOTTOM



\*\*\*

**MAIN DIMENSIONS**

- LOA : 53,50 [M]
- L WL : 50,40 [M]
- B (MAX) : 13,50 [M]
- DEPTH MLD : 4,50 [M]
- DRAFT DESIGNED : 3,20 [M]
- DRAFT MAX : 3,50 [M]
- COMPLEMENT : 42 MEN

**SHIP'S REGISTRATION**

- SHIP'S NAME : VICTORY-G
- CALL SIGN : 3E014
- PORT OF REGISTRY : PANAMA
- OFFICIAL No : 54781-PEXT
- IAC No : 931555
- GROSS TONNAGE
- NET TONNAGE : 317

APPROVALS		DATE	
DESIGNED	FOR APPROVAL	DATE	DATE
		<b>VICTORY-G</b>	
A-FRAME ARRANGEMENT			
NO.	DATE	BY	CHKD.
01	01/11/2011	IT	IT